

rosewood

house

We are a modern 75 bedroom care home in the heart of Gateshead which opened in spring 2010. We provide 24 hour residential, dementia and nursing care.

Rosewood House has six lounge areas with large bay windows overlooking our sensory garden. All our bedrooms are full en-suite wet rooms which are wheelchair accessible. All our courtyard rooms open into a safe, enclosed sensory garden with easy lift and ramp access.

A genuine love of delivering consistently wonderful service levels is our aim. Our friendly staff are fully trained on the premises in our in house training suite, to ensure your loved ones receive the utmost excellent care they need. We have a very experienced local team of nurses who are able to provide more complex nursing care needs.

The home has a visiting podiatrist, dentist, optician and a weekly ward round by our local G.P. surgery.

Fresh food is prepared daily by our highly experienced and qualified chefs. All fresh produce is sourced locally.

Residents can join the cinema club and watch their favourite movies in our in house wide screen cinema. With our activities co-ordinator there are plenty of activities happening weekly to keep your loved ones active and socialising with involvement from local groups and regular day trips out. We have a fully equipped hairdressing and beauty salon with a visiting hairdresser.

Friendly, happy and safe environment is what Rosewood House is all about. We cater for the individual needs of those you love most.

Rosewood House – caring without compromise

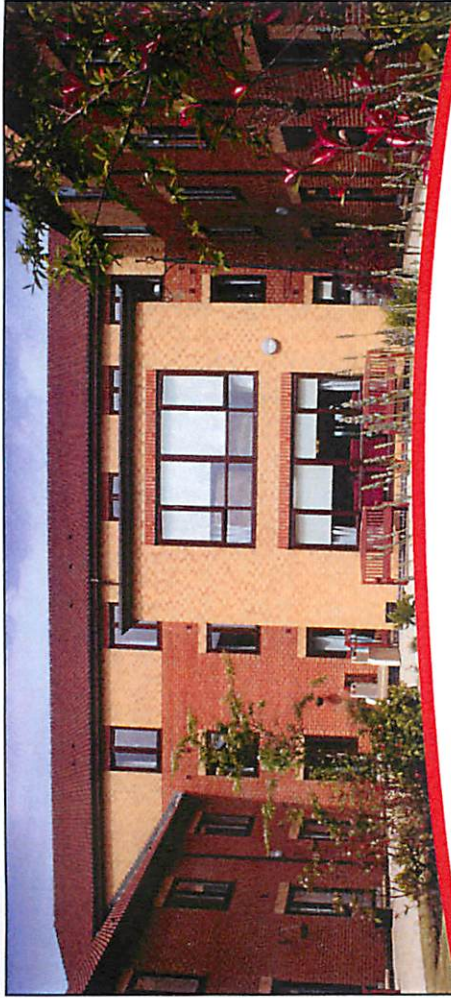
We are an eco-friendly company with rain water harvesting, recycling and solar powered heating.

Please call our Home Manger on **0191 460 6000** for a friendly chat or email info@rosewoodcare.co.uk for more information to find out about all that we are and what we do.



rosewood house, 7 Kyle Road, Bensham, Gateshead, NE8 2YE.
0191 460 6000 • info@rosewoodcare.co.uk • www.rosewoodcare.co.uk
rosewood house is part of Rosewood Care LLP – Care without compromise.

rosewood 



We are a modern 75 bedroom care home in the heart of Gateshead which opened in spring 2010. We provide 24 hour residential, dementia and nursing care.

Rosewood House has six lounge areas with large bay windows overlooking our sensory garden. All our bedrooms are full en-suite wet rooms which are wheel chair accessible. All our courtyard rooms open into a safe enclosed sensory garden with easy lift and ramp access.

A genuine love of delivering consistently wonderful service levels is our aim. Our friendly staff are fully trained on the premises in our in house training suite, to ensure your loved ones receive the utmost excellent care they need. We have a very experienced local team of nurses who are able to provide more complex nursing care needs.

The home has a visiting podiatrist, dentist, optician and a weekly ward round by our local G.P. surgery.

Fresh food is prepared daily by our highly experienced and qualified chefs. All fresh produce is sourced locally.

Residents can join the cinema club and watch their favourite movies in our in house wide screen cinema. With our activities co-ordinator there are plenty of activities happening weekly to keep your loved ones active and socialising with involvement from local groups and regular

day trips out. We have a fully equipped hair dressing and beauty salon with a visiting hairdresser.

Friendly, happy and safe environment is what Rosewood House is all about. We cater for the individual needs of those you love most.

Rosewood House – caring without compromise

We are an eco-friendly company with rain water harvesting, recycling and solar powered heating.

Please call our Home Manger on 0191 460 6000 for a friendly chat or email info@rosewoodcare.co.uk for more information to find out about all that we are and what we do.

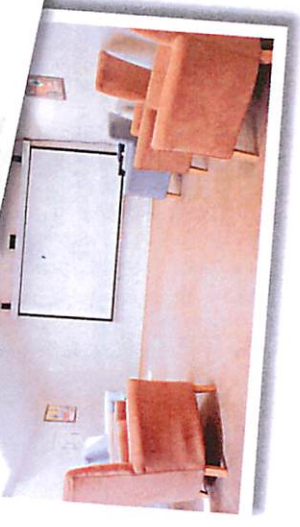
rosewood
—house—

"I am very happy with the care and support I receive."
Resident
"The staff are absolutely lovely. They are very caring."
Resident's family

CQC Inspection Report July 2013

rosewood house, 7 Kyle Road, Bensham, Gateshead, NE8 2YE.
0191 460 6000 • info@rosewoodcare.co.uk • www.rosewoodcare.co.uk
rosewood house is part of Rosewood Care LLP – Care without compromise.

rosewood
—house—



rosewood
—house—

rosewood house, 7 Kyle Road, Bensham, Gateshead, NE8 2YE.
0191 460 6000 • info@rosewoodcare.co.uk • www.rosewoodcare.co.uk
rosewood house is part of Rosewood Care LLP – Care without compromise.

rosewood
—house—